



REGIONAL DISTRICT OF NORTH OKANAGAN

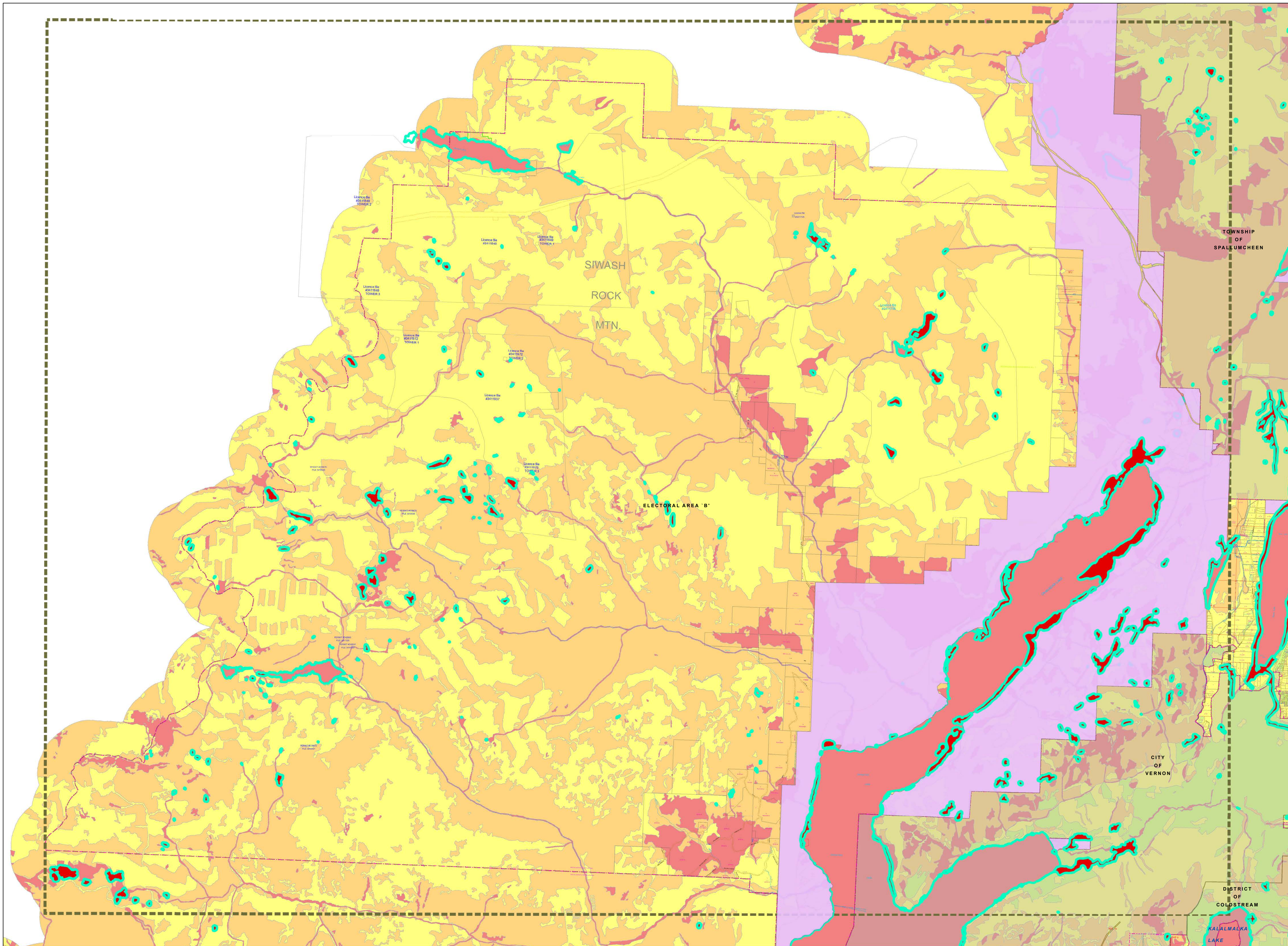
ELECTORAL AREAS B & C
OFFICIAL COMMUNITY PLAN
Schedule C3 - Westside
Environmentally Sensitive Lands
and Development Permit Areas

To Accompany Official Community
Plan Bylaw No. 2626, 2014.

LEGEND

Conservation Ranking

- Very High
- High
- Moderate
- Low
- Wetlands
- Map Sheet Boundaries
- First Nations

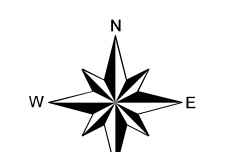


Schedule "C" to accompany Regional District of North Okanagan "Electoral Areas "B" and "C" Official Community Plan Bylaw No. 2626, 2014"

I hereby certify the foregoing to be a true and correct copy of Schedule "C" attached to and forming part of Bylaw No. 2626, 2014 cited as "Electoral Areas "B" and "C" Official Community Plan Bylaw No. 2626, 2014" as ADOPTED by the Board of Directors on the 3rd day of September, 2014.

Dated at Coldstream, BC this 8th day of September, 2014.

Corporate Officer



1:50,000

